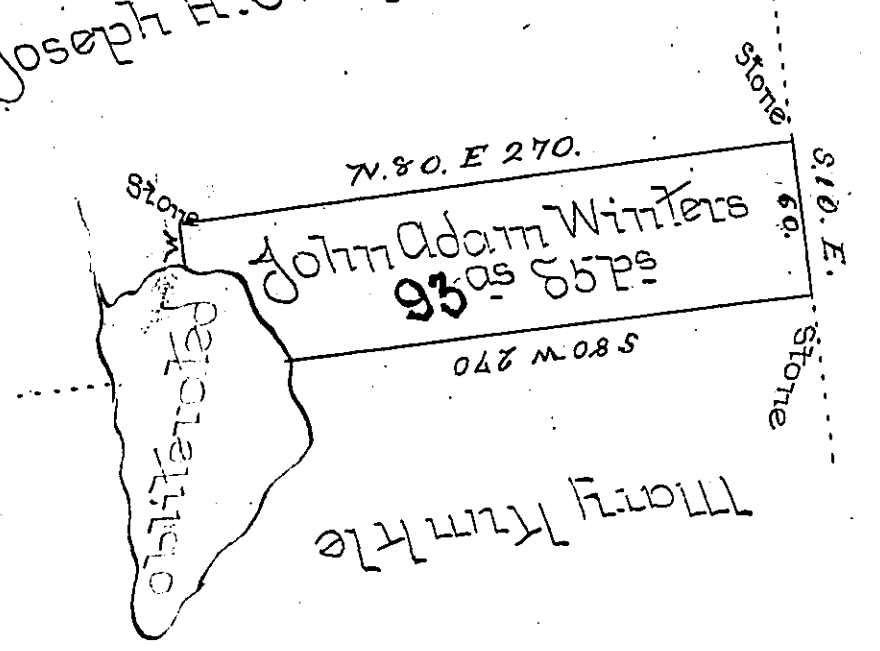


Vacant
Now Joseph H. Chapman



Draught of a tract of land situate in the Township of Sugarloaf in Luzerne County adjoining Conrad Horn and Mary Kunkle & containing Ninety five acres and eighty three perches of land, besides the usual Allowance &c. Surveyed the above described tract of land on the 25th day of December 1829 for John Adam Winters, by Virtue of his Warrant dated the 21st day of November A.D. 1829

John Bennett US.

To Gabriel Heister Esq:
Survey Genl -

IN TESTIMONY that the above is a copy of the original remaining on file in the Department of Internal Affairs of Pennsylvania, made conformably to an Act of Assembly approved the 16th day of February, 1833, I have hereunto set my Hand and caused the Seal of said Department to be affixed at Harrisburg, this fourth day of October 1898.

James W. Latta
Secretary of Internal Affairs.